

PRODUCT INFORMATION PACKET

marathon®
Motors

Model No: 449TTGS16557

Catalog No: H504A

350 HP Explosion Proof Motor, 3 phase, 1800 RPM, 460 V, 449T Frame, EPFC
Explosion Proof NEMA Motors



Regal and Marathon are trademarks of Regal Beloit Corporation or one of its affiliated companies.
©2020 Regal Beloit Corporation, All Rights Reserved. MC017097E

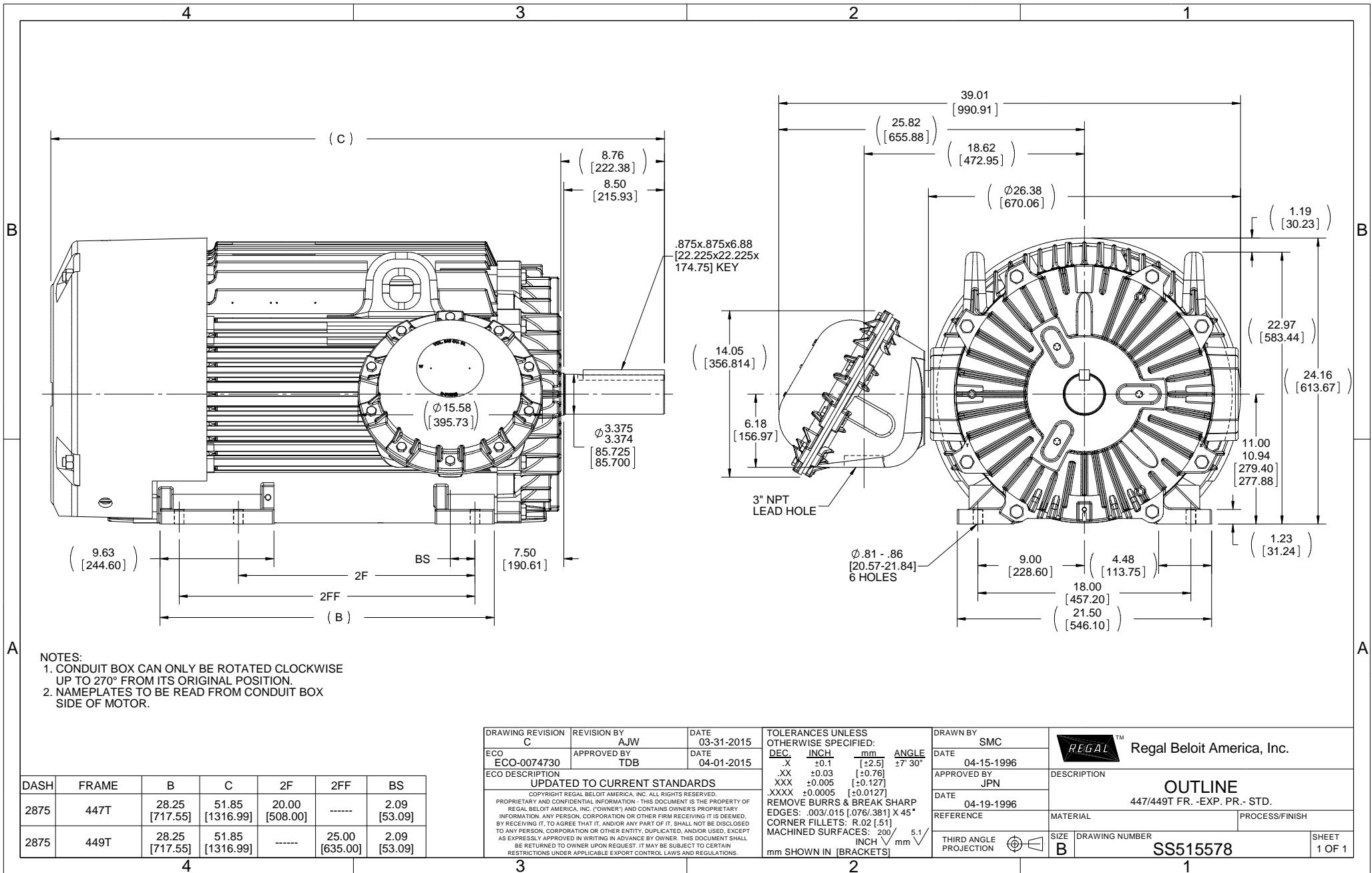
REGAL

Nameplate Specifications

Output HP	350 Hp	Output KW	260.0 kW
Frequency	60 Hz	Voltage	460 V
Current	395.0 A	Speed	1785 rpm
Service Factor	1	Phase	3
Efficiency	96.2 %	Power Factor	86.5
Duty	Continuous	Insulation Class	F
Design Code	B	KVA Code	G
Frame	447/449T	Enclosure	Explosion Proof Fan cooled
Thermal Protection	Thermostats (N/C)	Ambient Temperature	40 °C
Drive End Bearing Size	NU319	Opp Drive End Bearing Size	6318
UL	UL Listed; also, UL Certified for Canada	CSA	N
CE	N	IP Code	54
Hazardous Location	EXP PROOF CL I GR C&D CL II GR F&G T3B		

Technical Specifications

Electrical Type	Squirrel Cage Inverter Rated	Starting Method	Part Wdg Start & Wye Start Delta Run Or Inverter
Poles	4	Rotation	Reversible
Resistance Main	.0075 Ohms	Mounting	Rigid Base
Motor Orientation	Horizontal	Drive End Bearing	Roller
Opp Drive End Bearing	Ball	Frame Material	Cast Iron
Shaft Type	T	Overall Length	51.85 in
Frame Length	28.75 in	Shaft Diameter	3.375 in
Shaft Extension	8.76 in	Assembly/Box Mounting	F1 ONLY
Outline Drawing	B-SS515578-2875	Connection Drawing	A-EE7300CB



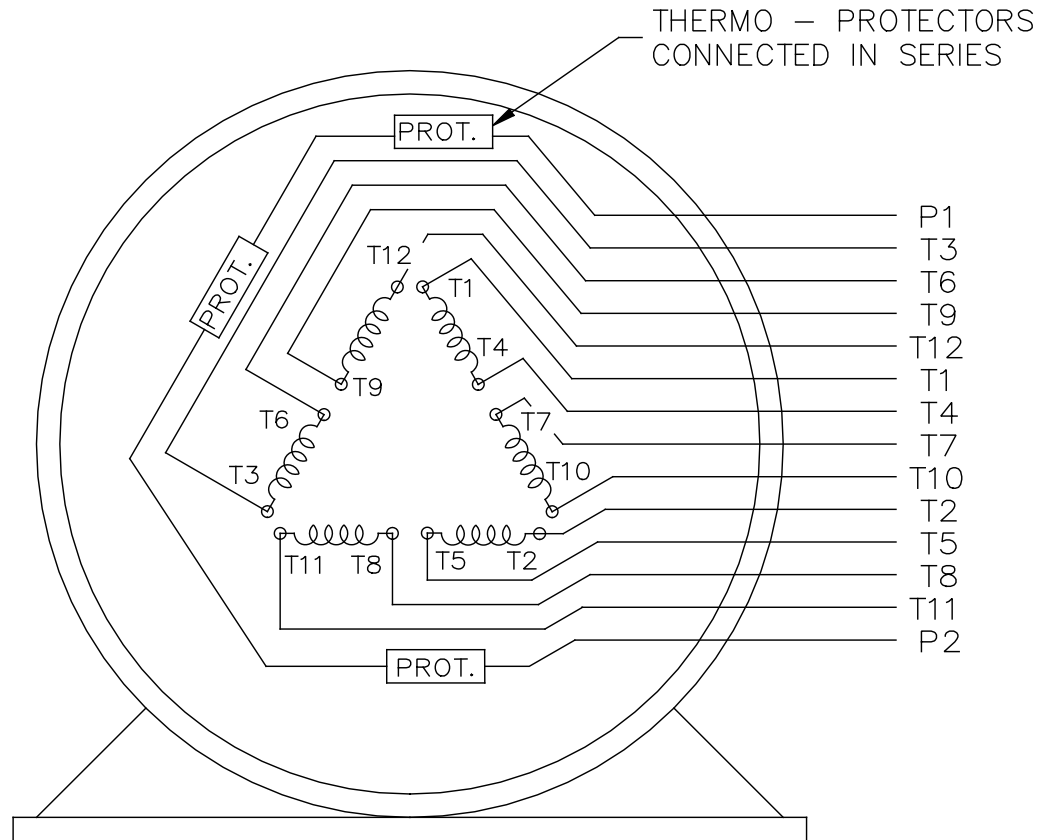
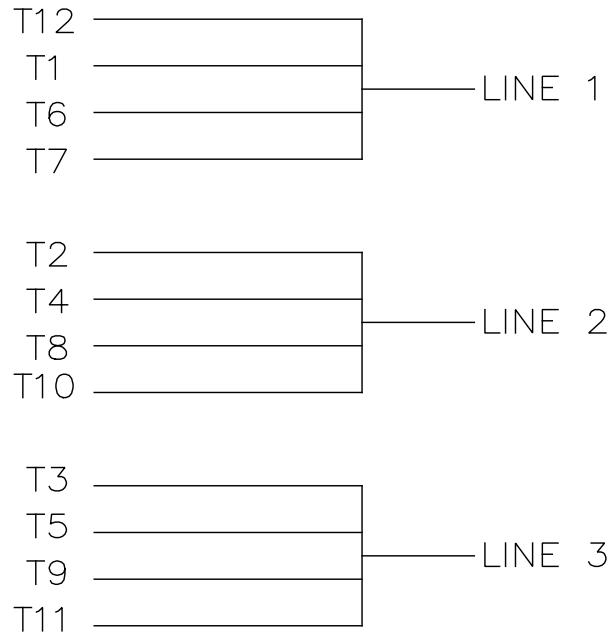
DASH	FRAME	B	C	2F	2FF	BS
2875	447T	28.25 [717.55]	51.85 [1316.99]	20.00 [508.00]	-----	2.09 [53.09]
2875	449T	28.25 [717.55]	51.85 [1316.99]	-----	25.00 [635.00]	2.09 [53.09]

DRAWING REVISION C	REVISION BY AJW	DATE 03-31-2015
ECO-0074730	APPROVED BY TDB	DATE 04-01-2015
ECO DESCRIPTION UPDATED TO CURRENT STANDARDS		
<small>COPYRIGHT REGAL BELOIT AMERICA, INC. ALL RIGHTS RESERVED. PROPRIETARY AND CONFIDENTIAL INFORMATION - THIS DOCUMENT IS THE PROPERTY OF REGAL BELOIT AMERICA, INC. ("OWNER") AND CONTAINS OWNER'S PROPRIETARY INFORMATION. ANY PERSON, CORPORATION OR OTHER FIRM RECEIVING IT IS DEEMED, BY RECEIVING IT, TO AGREE THAT IT, AND/OR ANY PART OF IT, SHALL NOT BE DISCLOSED TO ANY PERSON, CORPORATION OR OTHER ENTITY, DUPLICATED, AND/OR USED, EXCEPT AS EXPRESSLY APPROVED IN WRITING IN ADVANCE BY OWNER. THIS DOCUMENT SHALL BE RETURNED TO OWNER UPON REQUEST. IT MAY BE SUBJECT TO CERTAIN RESTRICTIONS UNDER APPLICABLE EXPORT CONTROL LAWS AND REGULATIONS.</small>		

TOLERANCES UNLESS OTHERWISE SPECIFIED:			
DEC	INCH	mm	ANGLE
.X	+0.1	[+2.5]	±7° 30'
.XX	±0.03	[±0.76]	
.XXX	±0.005	[±0.127]	
.XXXX	±0.0005	[±0.0127]	
REMOVE BURRS & BREAK SHARP EDGES: .003/.015 [.076/.381] X 45°			
CORNER FILLETS: R.02 [.51]			
MACHINED SURFACES: 200			
INCH $\sqrt{5.1}$ mm			
mm SHOWN IN [BRACKETS]			

DRAWN BY SMC
DATE 04-15-1996
APPROVED BY JPN
DATE 04-19-1996
REFERENCE

Regal Beloit America, Inc.	
DESCRIPTION OUTLINE	
447/449T FR. -EXP. PR.- STD.	
MATERIAL	PROCESS/FINISH
THIRD ANGLE PROJECTION	SIZE B
DRAWING NUMBER SS515578	SHEET 1 OF 1



VIEW OF TERMINAL END

				TOLERANCES UNLESS SPECIFIED		REGAL REGAL - BELOIT CORPORATION	DRAWN KL 02-27-2003			
				DEC.	INCHES		CHK GFH 03-03-2003			
				.X	± -		APPD JES 03-03-2003			
				.XX	± -	TITLE CONNECTION DIAGRAM - EXTERNAL 12 LEAD SINGLE VOLTAGE	SCALE 1=1			
				.XXX	± -		REF			
A	CHANGED TO REGAL TITLEBLOCK	ECO-0108299	WGJ 08-18-2016	EMH	.XXXX	MAT'L.	FMF			
NO.	REVISION	BY & DATE	CHK	ANG	± -	FINISH	PREV			
THIS DRAWING IN DESIGN AND DETAIL IS OUR PROPERTY AND MUST NOT BE USED EXCEPT IN CONNECTION WITH OUR WORK ALL RIGHTS OF DESIGN AND INVENTION ARE RESERVED THIS IS AN ELECTRONICALLY GENERATED DOCUMENT - DO NOT SCALE THIS PRINT				RFP	CAD FILE EE7300CB		SIZE A	DRAWING NO. EE7300CB	PAGE OF	REV.
				DIST						

Data Sheet

Date: 6/19/2017

449TGS16557

Customer:



Submittal

Attention:

FAREEDA DUDEKULA

Data @ 460 V

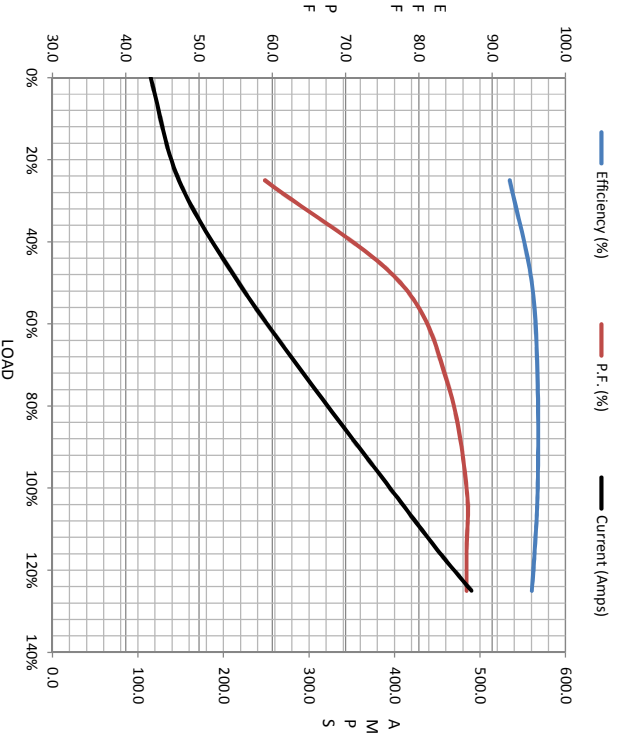
Submitted by:

Motor Load Data

Load	0%	25%	50%	75%	100%	115%	125%	LR
Current (Amps)	115	148	218	304	395	450	490	2,550
Torque (ft-lb)	0.00	256	512	770	1,030	1,185	1,290	2,075
RPM	1800	1796	1794	1790	1785	1,782	1780	0
Efficiency (%)		92.4	95.4	96.2	96.2	95.8	95.4	
P.F. (%)	5.5	59.0	77.5	84.0	86.5	86.5	86.5	31.0

Motor Speed Data

	LR	Pull-Up	BD	Rated	Idle	Information Block
Speed (rpm)	0	900	1725	1785	1800	HP 350.0
Current (Amps)	2,550	2,250	1,350	395	115	Sync. RPM 1800
Torque (ft-lb)	2,075	1,950	2,400	1,030	0.00	Frame 449
						Enclosure TEFC
						Construction TFN
						Voltage 460 V
						Frequency 60 Hz
						Design A
						LR Code letter G
						Service Factor 1.15
						Temp Rise @ FL 80 °C
						Duty CONT
						Ambient 40 °C
						Elevation 1,000 feet
						Rotor/Shaft wkt 98.0 Lb-Fe
						Rel Wdg T4494123 NONE
						Sound Pressure @ 1M 85 dBA
						VFD Rating CONSTANT 2:1
						Outline Dwg B-SS51557/8-2875
						Conn. Diag A-EET300CB
						Additional Specifications:
						0
						0



EQUIV CKT (OHMS / PHASE)				
R1	R2	X1	X2	Xm
0.0070	0.0050	0.0660	0.1000	2.3110

